

Milestone PROS Integration

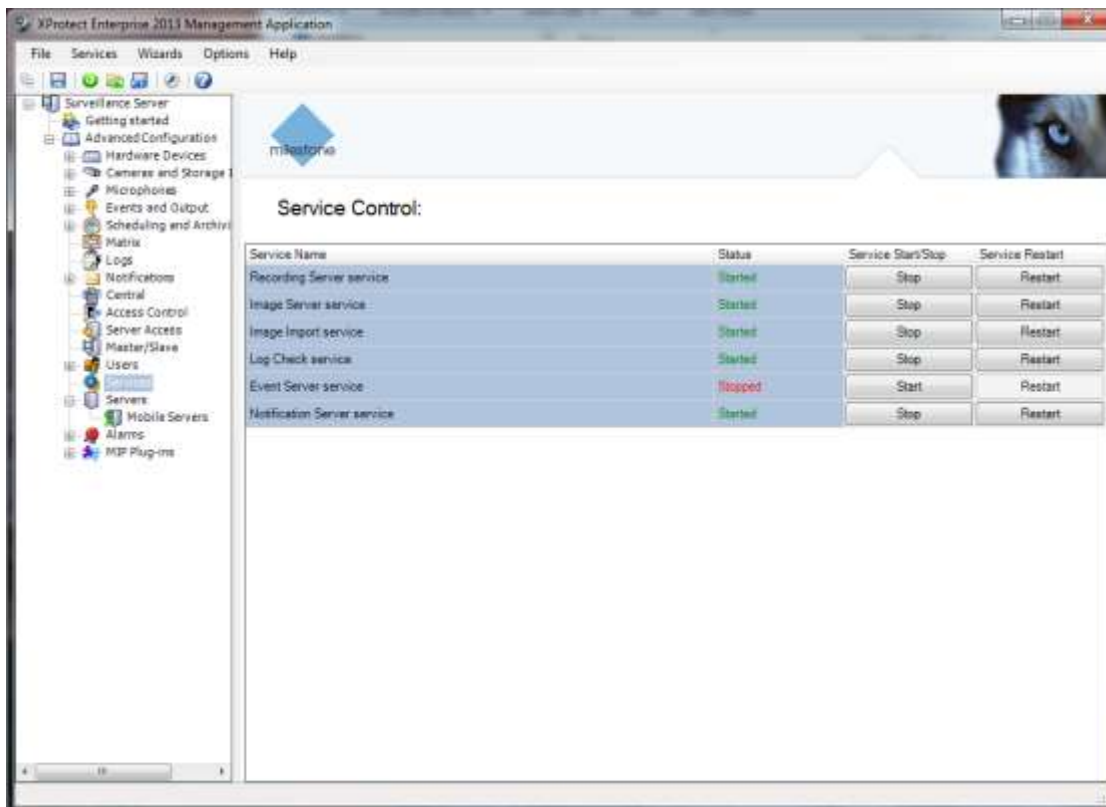
Installation of the Access Control Plug-in

Make sure that you have:

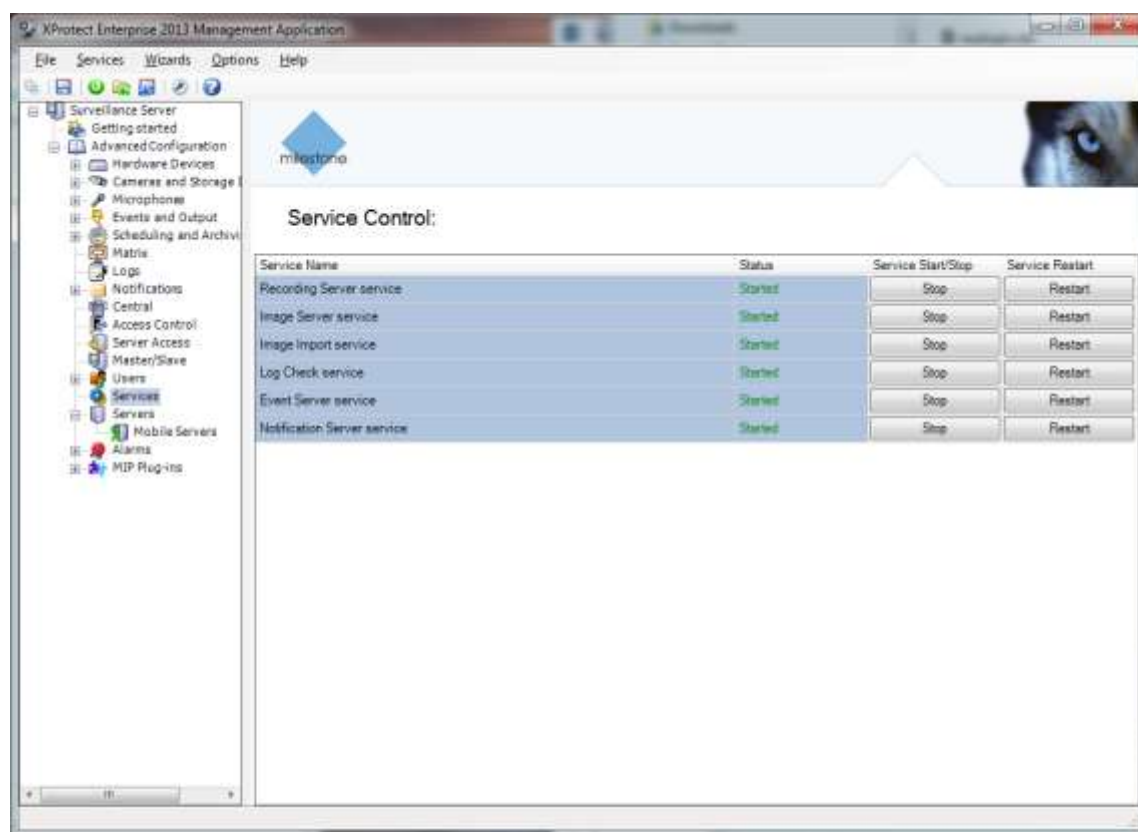
- a running **PROS CS** version 1.1.28 or higher
- a running **Milestone XProtect** system.
- you have the **PROS_AccessControlPlugin.msi** setup file available.
- you have **Microsoft.net Framework 4.5.1** installed.

If these preconditions apply:

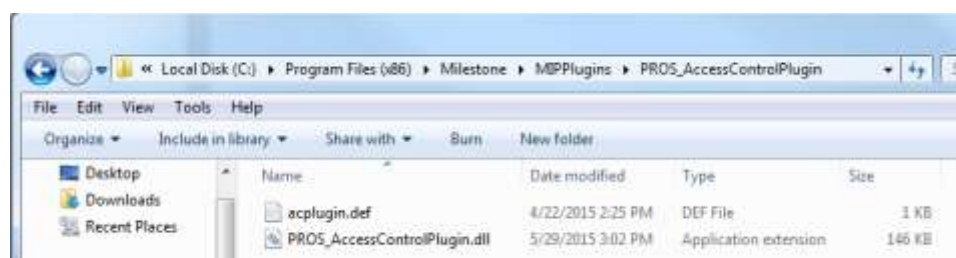
- Create Operator in the PROS that will be used by Video system for login to PROS. Password length must be at least 5 characters.
- Start the **Milestone XProtect Management** application.
- Select **Advanced Configuration**.
- Stop the Event server Service.



- Run the plug-in installation process until it is completed (**PROS_AccessControlPlugin.msi**).
- Restart the Event Server Service.



If the plug-in is installed correctly the below listed files can be found in the PROS_AccessControlPlugin folder of the Milestone XProtect system.



Important!

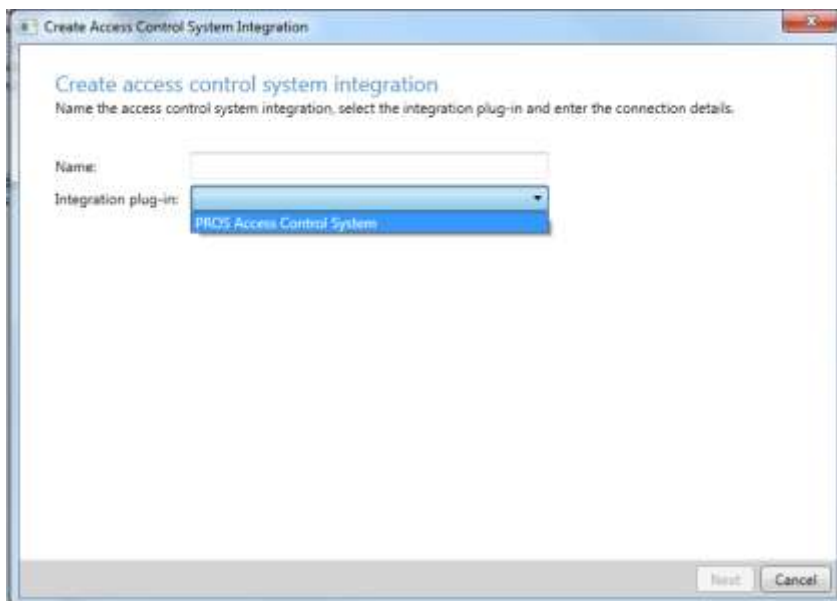
If the PROS Server and the XProtect system are not running on the same server, make sure that the **PROS_AccessControlPlugin** plug-in is installed on the server where the Milestone XProtect system is installed.

Configuration of the Access Control Integration

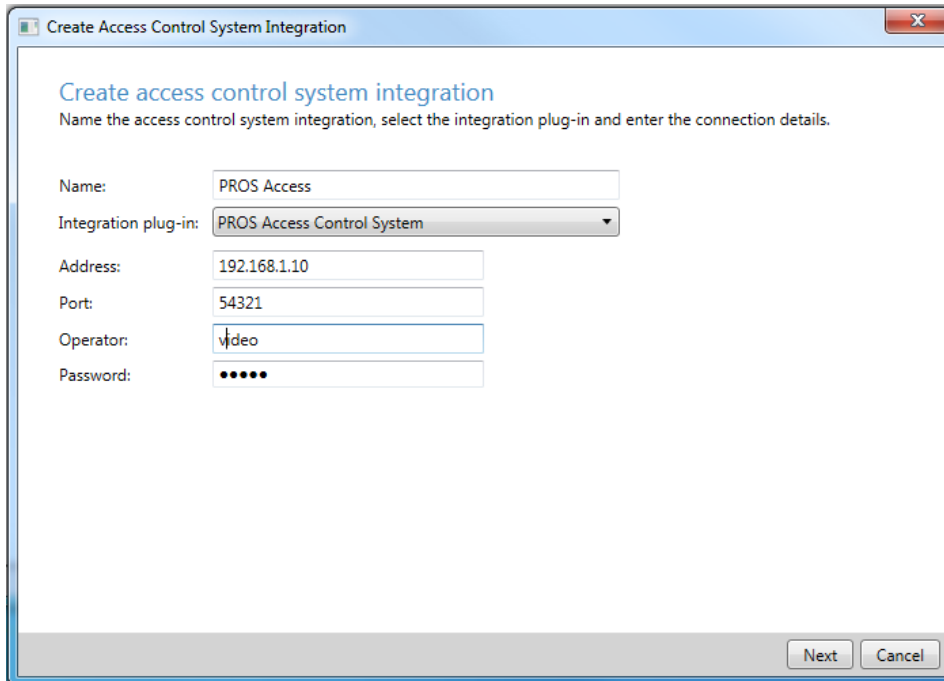
Go to the management application and navigate to the **Access Control** section in the tree. Right-click the node and select “Create new...” to create a new control.



- Enter a name (e.g. PROS Access).
- Select the installed Plug-in (PROS_Access Control System).



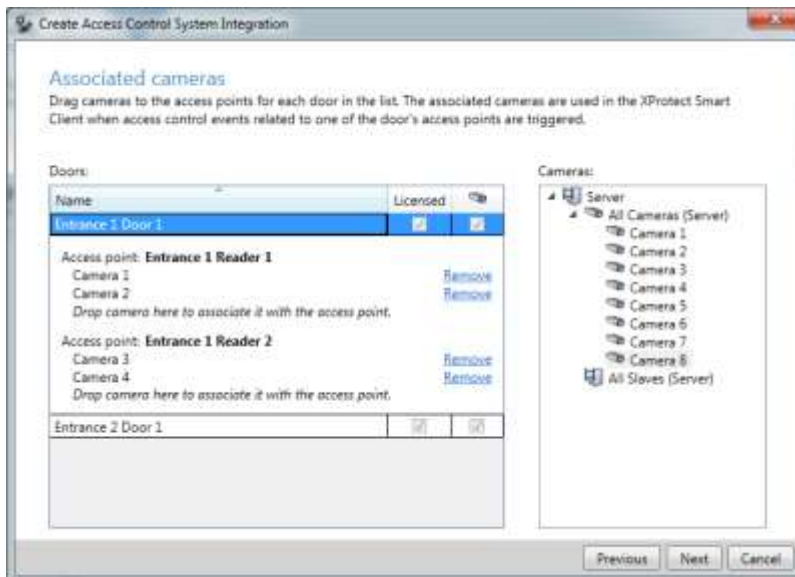
- Enter an PROS Server IP-Adress or Host name.
- Enter port number (default is 54321)
- Enter the Username and Password of the operator created in the PROS
- Click the **Next** button.



The wizard will now try to connect the PROS to retrieve relevant configurations. Once connected, a list of all PROS configurations is displayed, as e.g. devices, events, commands.

- Click **Next** to proceed.

The dialog **Associated Cameras** is displayed:



- Select a camera from the right column and assign it by Drag-and-Drop to the reader of the appropriate access point in the left column.
- If everything is configured, Click the **Next** button.

With this step the configuration is done:



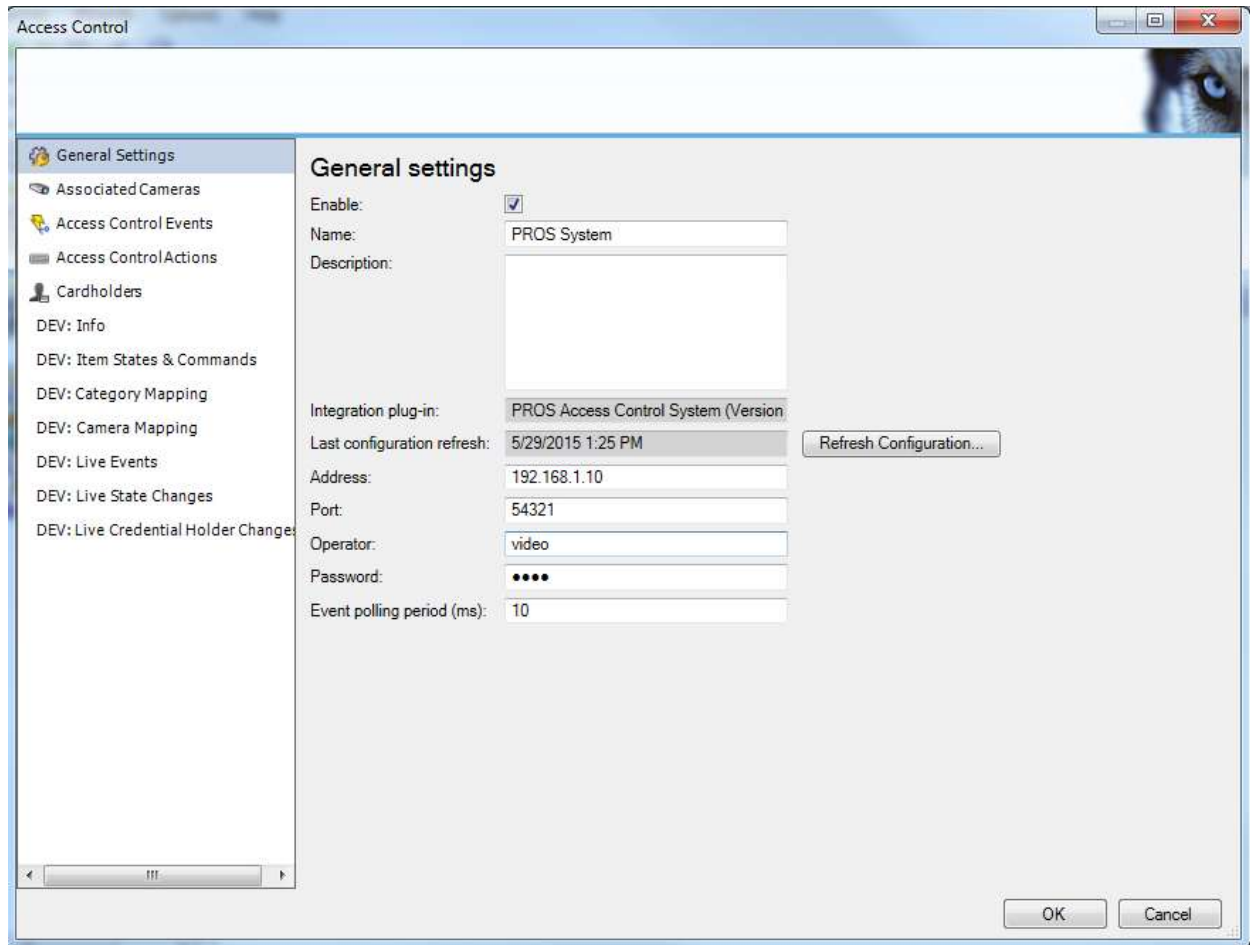
- Verify that the PROS and XProtect system are connected.



Synchronization of Configuration Changes

Cardholder data will automatically be updated in the XProtect system. For other configuration changes, a manual refresh action is required.

Click the **Refresh Configuration** button to synchronize the systems.



The screenshot displays the 'Access Control' application window. On the left is a navigation pane with the following items: General Settings (selected), Associated Cameras, Access Control Events, Access Control Actions, Cardholders, DEV: Info, DEV: Item States & Commands, DEV: Category Mapping, DEV: Camera Mapping, DEV: Live Events, DEV: Live State Changes, and DEV: Live Credential Holder Changes. The main area is titled 'General settings' and contains the following fields:

- Enable:
- Name: PROS System
- Description: (empty text box)
- Integration plug-in: PROS Access Control System (Version
- Last configuration refresh: 5/29/2015 1:25 PM
- Address: 192.168.1.10
- Port: 54321
- Operator: video
- Password: (masked with four dots)
- Event polling period (ms): 10

A 'Refresh Configuration...' button is located to the right of the 'Last configuration refresh' field. At the bottom right of the window are 'OK' and 'Cancel' buttons.